



Automotive Safety Engineering Pty Ltd

ABN 88 066 476 051

Postal Address: PO Box 113, LONSDALE, SA, 5160.

Test Facility: 28 Donegal Road, LONSDALE, SA, 5160.

Mobile: 0417 845 711

Email: ase@internode.on.net
Web: www.autosafety.com.au



Phone: 08 8384 7863

Fax: 08 8384 3447

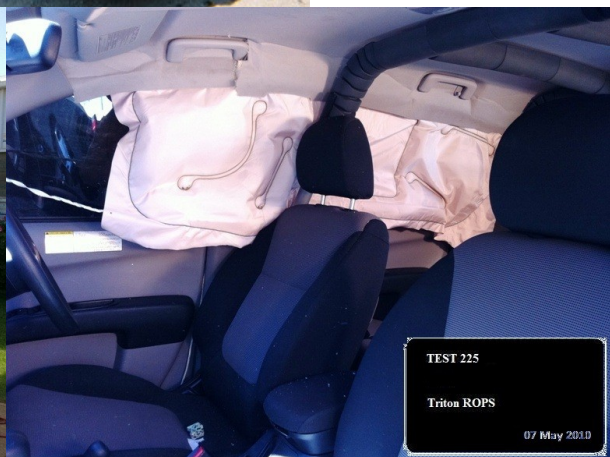
ROLL OVER PROTECTIVE STRUCTURE—ROPS

Roll Over Protective Structure—ROPS—are fitted to motor vehicles to improve the vehicles safety in the event of a rollover accident.

Roofs of motor vehicles are not designed to protect the vehicle occupant in an event of a rollover accident!



The ROPS design must conform with the VSB14 LK8 National Code of Practice.



If any member of ROPS is in a vehicle, occupant head strike area requires an energy absorbing foam that also must comply with VSB14 LK8.

ROPS also need to be tested for compatibility with curtain airbags.

That is why vehicles—specially off road ones, need ROPS.

ASE conducts static and dynamic (crash) tests to certify your ROPS.